

100%
Recycled
Nylon

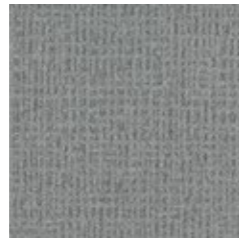
Monochrome

Interface®

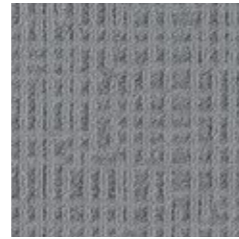
Monochrome



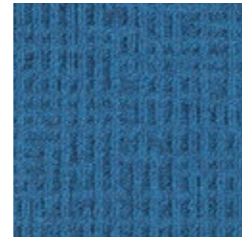
346690 Millstone



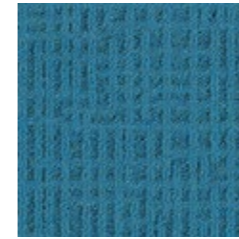
346691 Platinum



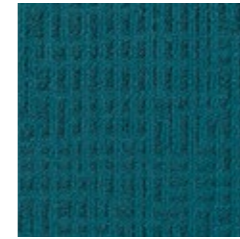
346702 Mercury



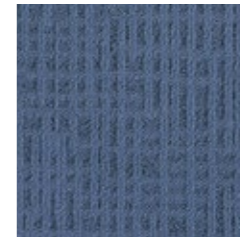
346703 Flemish Blue



346704 Pacific



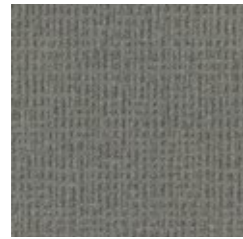
346705 Peacock



346706 Lupin



346707 Flag Blue



346692 Titanium



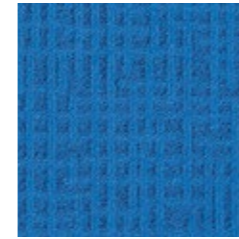
346693 Felt



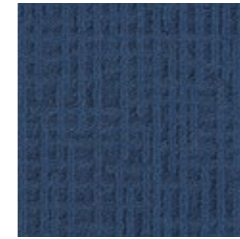
346708 Lobelia



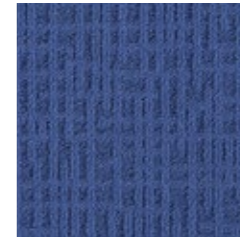
346709 Nightshadow



346710 Blue



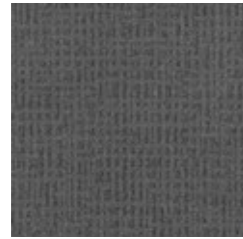
346711 Iris



346712 Danube



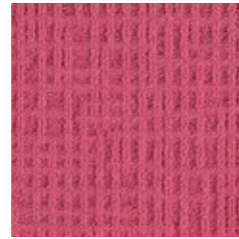
346713 Elderberry



346694 Storm



346695 Seal



346714 Very Berry



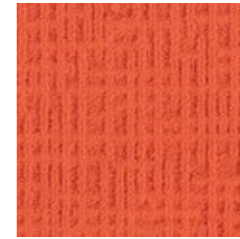
346715 Lilac Haze



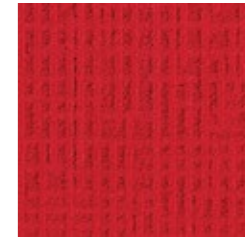
346716 Redwood



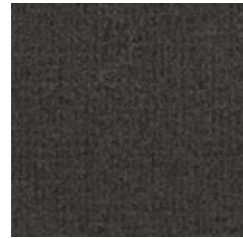
346717 Damson



346718 Orange



346719 Gerbera



346696 Carbon



346697 Black



346720 Terra Firma



346721 Wine Berry



346722 Malt



346723 Putty



346724 Rhino



346725 Coffee Bean



346698 Silver



346699 Surf



346726 Cream



346727 Caraway



346728 Briar



346729 Havana



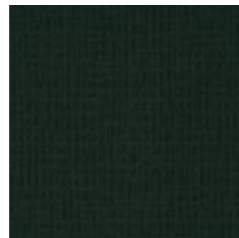
346730 Barley



346731 Castor



346700 Jade



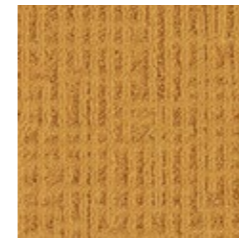
346701 Jungle



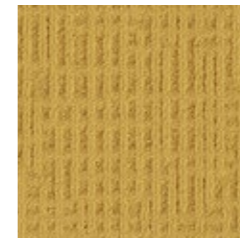
346732 Papyrus



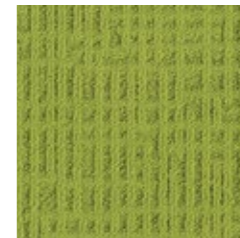
346733 Bullrush



346734 Spun Gold



346735 Dandelion



346736 Meadow



346737 Yew

Monochrome



346705 Peacock, 346704 Pacific, 346699 Surf & 346718 Orange

Installed: Monolithic

Monochrome



346734 Spun Gold, 346735 Dandelion, 346731 Castor,
346728 Briar, 346730 Barley, 346718 Orange, 346719 Gerbera,
346717 Damson, 346716 Redwood & 346721 Wine Berry

Installed: Monolithic

Monochrome



346690 Millstone, 346723 Putty, 346724 Rhino,
346729 Havana, 346725 Coffee Bean

Installed: Monolithic

| | |
|---------------------------|---|
| Product Definition | Tufted Patterned Structured Loop Tile |
| Konstruktion | Tuftgemusterte strukturierte Schlingenqualität |
| Descripción | Moqueta modular tufting bucle estructurado con diseño |
| Description | Dalle de moquette à velours tufté bouclé structuré |
| Type | Getufte gedessineerde gestructureerde bouclé |
| Descrizione | Bouclé tufted strutturato |

| | |
|----------------------|--|
| Pile Material | 100% BCF Solution Dyed Nylon contains pre- and post-consumer recycled content |
| Polfasermaterial | 100% Polyamid garngefärbt mit recyceltem Anteil (Präund |
| Composición Fibra | Post-Konsumenten-Anteil |
| Composition | 100% Poliamida BCF tintada en masa con contenido reciclado pre y post-consumo |
| Poolmateriaal | 100% Polyamide BCF Teint en masse contenant des éléments recyclés pré et post-consommation |
| Fibra | 100% Solution Dyed Polyamide BCF, bevat pre- en post-consumer gerecycled content |
| | 100% Poliammide BCF tinta in massa con contenuto riciclato pre- e post - consumer |

| | |
|--|--|
| Pile Yarn Weight / Poleinsatzgewicht / Peso Fibra / Poids de fibre / Poolinzetgewicht / Peso Felpa | 787g/m ² ± 5% |
| Total Weight / Gesamtgewicht / Peso Total Poids total / Totaalgewicht / Peso Totale | 4714g/m ² ± 5% |
| Pile Height / Polschichtdicke / Altura Fibra / Hauteur de la fibre / Poolhoogte / Altezza Felpa | 3,8 mm ± 0,3mm |
| Total Thickness / Gesamtdicke / Espesor Total / Epaisseur totale / Totale dikte / Altezza Totale | 8,2 mm ± 0,5mm |
| Tufts per m² / Noppenzahl/m ² / Puntadas m ² / Densité du tuft par m ² / Aantal noppen per m ² / Densità Punti | 165,480 ± 5% |
| Backing Type / Rückenkonstruktion / Soporte / Sous-couche / Ruguitvoering / Sottofondo | Graphlex® |
| Wear Classification / Beanspruchungsklasse / Clasificación al tráfico / Classement Gebruiksintensiteit / Resistenza all'usura | Heavy Contract (EN 1307) Class 33 / LC2 |

| | |
|--|-------|
| Style | 34669 |
| 4m ² - 16 tiles per box (50 x 50 cm ± 0,2%) | |

| | |
|---|--|
| Radiant Panel / Scherentflammbarkeit | (EN ISO 9239/1) Euroclass Bfl s1 (EN ISO 13501) |
| Hot Metal Nut | Pass, low radius of effects of ignition (BS 4790) |

| | |
|--|--------------------------|
| Dimensional Stability / Dimensionsstabilität | ≤ 0,2% (EN 986 / EN 986) |
| Estabilidad Dimensional / Stabilité dimensionnelle | |
| Dimensionale stabiliteit / Test Stabilità dimensionale | |

| | | | | | |
|-------------------------|--------------|--------------|---------------|---------------|---------------|
| Sound Absorption | | | | | |
| 125Hz | 250Hz | 500Hz | 1000Hz | 2000Hz | 4000Hz |
| 0.00 | 0.05 | 0.10 | 0.20 | 0.40 | 0.45 |

EN 14041
CE
DOP: 1037/120129
textile floor covering
EN 1307

64AA6565
Bfl-s1 DS

Monolithic

26dB ≥ 2,4 ≥ 7 0.20

Icons: Fire, Impact, Abrasion, Stain, Slip, etc.

Light Value

| Product | Colour No | Colour Name | L Value* | Y Value* |
|-------------------|-----------|--------------|----------|----------|
| Monochrome | 346690 | Millstone | 537 | 21.7 |
| | 346691 | Platinum | 497 | 18.1 |
| | 346692 | Titanium | 439 | 13.8 |
| | 346693 | Felt | 387 | 10.5 |
| | 346694 | Storm | 348 | 8.4 |
| | 346695 | Seal | 285 | 5.7 |
| | 346696 | Carbon | 283 | 5.6 |
| | 346697 | Black | 182 | 2.6 |
| | 346698 | Silver | 589 | 26.9 |
| | 346699 | Surf | 534 | 21.4 |
| | 346700 | Jade | 259 | 4.7 |
| | 346701 | Jungle | 21.0 | 3.2 |
| | 346702 | Mercury | 465 | 15.7 |
| | 346703 | Flemish Blue | 327 | 7.4 |
| | 346704 | Pacific | 353 | 8.7 |
| | 346705 | Peacock | 272 | 5.2 |
| | 346706 | Lupin | 373 | 9.7 |
| | 346707 | Flag Blue | 250 | 4.7 |
| | 346708 | Lobelia | 240 | 4.1 |
| | 346709 | Nightshadow | 205 | 3.1 |
| | 346710 | Blue | 327 | 7.4 |
| | 346711 | Iris | 287 | 5.7 |
| | 346712 | Danube | 326 | 7.4 |
| | 346713 | Elderberry | 21.6 | 3.4 |
| | 346714 | Very Berry | 41.8 | 12.4 |
| | 346715 | Lilac Haze | 360 | 9.0 |
| | 346716 | Redwood | 233 | 3.9 |
| | 346717 | Damson | 267 | 5.0 |
| | 346718 | Orange | 483 | 17.1 |
| | 346719 | Gerbera | 365 | 9.3 |
| | 346720 | Terra Firma | 32.1 | 7.1 |
| | 346721 | Wine Berry | 228 | 3.7 |
| | 346722 | Malt | 577 | 25.6 |
| | 346723 | Putty | 39.4 | 10.9 |
| | 346724 | Rhino | 305 | 6.4 |
| | 346725 | Coffee Bean | 21.4 | 3.4 |
| | 346726 | Cream | 64.3 | 33.2 |
| | 346727 | Caraway | 54.1 | 22.0 |
| | 346728 | Briar | 42.8 | 13.1 |
| | 346729 | Havana | 265 | 4.9 |
| | 346730 | Barley | 56.0 | 23.9 |
| | 346731 | Castor | 54.3 | 22.2 |
| | 346732 | Papyrus | 536 | 21.6 |
| | 346733 | Bullrush | 50.8 | 19.1 |
| | 346734 | Spun Gold | 59.0 | 27.0 |
| | 346735 | Dandelion | 62.4 | 30.9 |
| | 346736 | Meadow | 50.3 | 18.7 |
| | 346737 | Yew | 33.9 | 8.0 |

* **Light Value:** L Value = L according to CIE L*a*b* colour space, Y Value = Light Reflectance Value according to BS 8493

Lichtreflexionswerte: L-Wert = L gemäß CIE L*a*b* Farbspektrum, Y-Wert = Lichtreflexionswert gemäß British Standard BS 8493

Valores de Reflectancia de Luz: Valor L = L según CIE L*a*b* espacio de color, Valor Y = Valor de reflectancia de luz según el estándar británico BS 8493

Valeurs concernant la lumière: Valeur L = L faisant référence à la méthode CIE L*a*b* pour la couleur, Valeur Y = Valeurs de réflectance de la lumière selon le British Standard BS 8493

Licht waarden: L Waarde = L volgens CIE L*a*b*kleurruimte, Y Waarde = Licht Reflectie Waarde volgens BS 8493

Indici di riflettanza alla luce: Indice L = L secondo CIE L*a*b* colour space, Indice Y = Indice di riflettanza alla luce secondo la norma BS 8493

Environmental Data Sheet

| Construction | | | |
|--|---|---------------------|---------------|
| Yarn system | 100% BCF Solution Dyed PA 6 | | |
| Backing system | Graphlex® | | |
| Recycled Content | Total Recycled Content | Pre consumer | Post consumer |
| Product average | 56,54% | 48,14% | 8,40% |
| Yarn | 100,00 % | 50,00% | 50,00% |
| Recycled content is the same for all colourways. | | | |
| Carbon Footprint | | | |
| Global Warming Potential (kgs CO2 equivalents/sq meter) | | | |
| Full life-cycle carbon footprint (following our EPD results or EPD calculation method) | Raw materials and Production: | 7.78 kg CO2 eq./m2 | |
| | Delivery and installation: | 0.70 kg CO2 eq./m2 | |
| | Use (1 year): | 2.92 kg CO2 eq./m2 | |
| | End of life (waste to energy): | 8.57 kg CO2 eq./m2 | |
| TOTAL (10 years' lifetime): | | 19.97 kg CO2 eq./m2 | |
| CO ₂ compensation | Carbon neutral Cool Carpet® is optional | | |
| Manufacturing | | | |
| Location | Scherpenzeel, NL Factory is certified ISO 14001 since 1996 and ISO 9001 since 1990 | | |
| Installation Impacts | | | |
| TacTiles™ | Optimised for glue-free installation with TacTiles™ connectors with virtually zero VOCs | | |
| Installation Waste | In a typical installation* using the installation method below: | | |
| | Monolithic - 3-4% installation waste | | |
| | For reference: 2 metre wide broadloom typically generates 7-10 % installation waste | | |
| * In a rectangular building, installed before walls. | | | |
| End-of-life | | | |
| Alternatives to landfill | Reuse: Can be cleaned and reused in a non-critical location to extend its useful life | | |
| | Recycling: Can be returned through the Interface ReEntry scheme and be re-used as raw material in new carpet tiles | | |
| | Waste-to-Energy: Can be incinerated in appropriate waste to energy plant | | |
| Indoor Air Quality | | | |
| GUT (Gemeinschaft umweltfreundlicher Teppichboden) | The product passes all requirements of GUT's testing criteria regarding hazardous substances, emissions and odour. GUT PRODIS Certificate no. 54AA6565 | | |
| CRI (Carpet & Rug Institute) | Compliant to LEED IQ 4.3 credit (tested in Eurofins to the equivalent test of the CRI Green Label Plus) | | |
| Compliance to Green Building Schemes | | | |
| See next page to check how our products contribute to the main green building certification schemes (BREEAM, LEED, HQE and DGNB) | | | |
| Type III Environmental Product Declaration | | | |
| EPD according to ISO 14025 | This product has a type III generic Environmental Product Declaration, EPD-IFF-20120019-CBD1-EN | | |

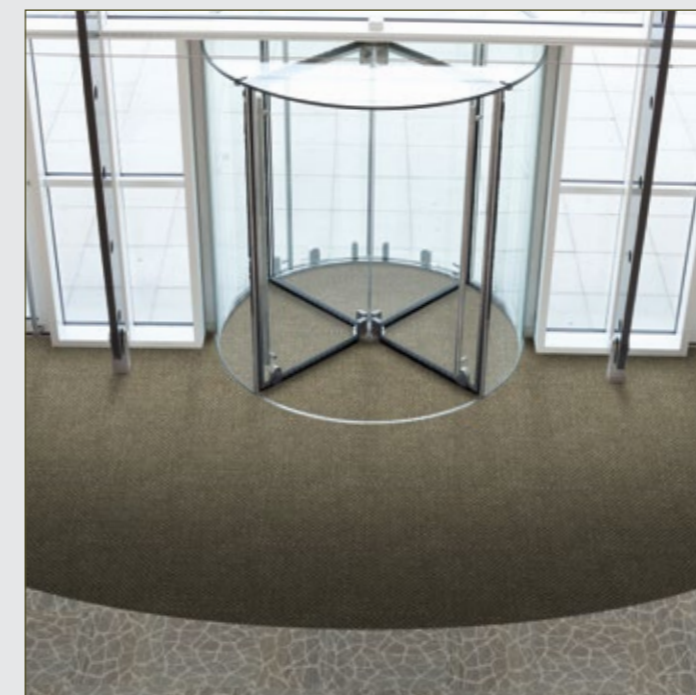
| Recycled content – colour level | | | | | | |
|---------------------------------|------------------------|-------------------------------|--------------------------------|-----------------------|------------------------------------|-------------------------------------|
| Colourway | Total recycled content | Pre consumer recycled content | Post consumer recycled content | Yarn recycled content | Yarn Pre consumer recycled content | Yarn Post consumer recycled content |
| 346690 Millstone | 56,54% | 48,14% | 8,40% | 100,00% | 50,00% | 50,00% |
| 346691 Platinum | 56,54% | 48,14% | 8,40% | 100,00% | 50,00% | 50,00% |
| 346692 Titanium | 56,54% | 48,14% | 8,40% | 100,00% | 50,00% | 50,00% |
| 346693 Felt | 56,54% | 48,14% | 8,40% | 100,00% | 50,00% | 50,00% |
| 346694 Storm | 56,54% | 48,14% | 8,40% | 100,00% | 50,00% | 50,00% |
| 346695 Seal | 56,54% | 48,14% | 8,40% | 100,00% | 50,00% | 50,00% |
| 346696 Carbon | 56,54% | 48,14% | 8,40% | 100,00% | 50,00% | 50,00% |
| 346697 Black | 56,54% | 48,14% | 8,40% | 100,00% | 50,00% | 50,00% |
| 346698 Silver | 56,54% | 48,14% | 8,40% | 100,00% | 50,00% | 50,00% |
| 346699 Surf | 56,54% | 48,14% | 8,40% | 100,00% | 50,00% | 50,00% |
| 346700 Jade | 56,54% | 48,14% | 8,40% | 100,00% | 50,00% | 50,00% |
| 346701 Jungle | 56,54% | 48,14% | 8,40% | 100,00% | 50,00% | 50,00% |
| 346702 Mercury | 56,54% | 48,14% | 8,40% | 100,00% | 50,00% | 50,00% |
| 346703 Flemish Blue | 56,54% | 48,14% | 8,40% | 100,00% | 50,00% | 50,00% |
| 346704 Pacific | 56,54% | 48,14% | 8,40% | 100,00% | 50,00% | 50,00% |
| 346705 Peacock | 56,54% | 48,14% | 8,40% | 100,00% | 50,00% | 50,00% |
| 346706 Lupin | 56,54% | 48,14% | 8,40% | 100,00% | 50,00% | 50,00% |
| 346707 Flag Blue | 56,54% | 48,14% | 8,40% | 100,00% | 50,00% | 50,00% |
| 346708 Lobelia | 56,54% | 48,14% | 8,40% | 100,00% | 50,00% | 50,00% |
| 346709 Night Shadow | 56,54% | 48,14% | 8,40% | 100,00% | 50,00% | 50,00% |
| 346710 Blue | 56,54% | 48,14% | 8,40% | 100,00% | 50,00% | 50,00% |
| 346711 Iris | 56,54% | 48,14% | 8,40% | 100,00% | 50,00% | 50,00% |
| 346712 Danube | 56,54% | 48,14% | 8,40% | 100,00% | 50,00% | 50,00% |
| 346713 Elderberry | 56,54% | 48,14% | 8,40% | 100,00% | 50,00% | 50,00% |
| 346714 Very Berry | 56,54% | 48,14% | 8,40% | 100,00% | 50,00% | 50,00% |
| 346715 Lilac Haze | 56,54% | 48,14% | 8,40% | 100,00% | 50,00% | 50,00% |
| 346716 Redwood | 56,54% | 48,14% | 8,40% | 100,00% | 50,00% | 50,00% |
| 346717 Damson | 56,54% | 48,14% | 8,40% | 100,00% | 50,00% | 50,00% |
| 346718 Orange | 56,54% | 48,14% | 8,40% | 100,00% | 50,00% | 50,00% |
| 346719 Gerbera | 56,54% | 48,14% | 8,40% | 100,00% | 50,00% | 50,00% |
| 346720 Terra Firma | 56,54% | 48,14% | 8,40% | 100,00% | 50,00% | 50,00% |
| 346721 Wine Berry | 56,54% | 48,14% | 8,40% | 100,00% | 50,00% | 50,00% |
| 346722 Malt | 56,54% | 48,14% | 8,40% | 100,00% | 50,00% | 50,00% |
| 346723 Putty | 56,54% | 48,14% | 8,40% | 100,00% | 50,00% | 50,00% |
| 346724 Rhino | 56,54% | 48,14% | 8,40% | 100,00% | 50,00% | 50,00% |
| 346725 Coffee Bean | 56,54% | 48,14% | 8,40% | 100,00% | 50,00% | 50,00% |
| 346726 Cream | 56,54% | 48,14% | 8,40% | 100,00% | 50,00% | 50,00% |
| 346727 Caraway | 56,54% | 48,14% | 8,40% | 100,00% | 50,00% | 50,00% |
| 346728 Briar | 56,54% | 48,14% | 8,40% | 100,00% | 50,00% | 50,00% |
| 346729 Havana | 56,54% | 48,14% | 8,40% | 100,00% | 50,00% | 50,00% |
| 346730 Barley | 56,54% | 48,14% | 8,40% | 100,00% | 50,00% | 50,00% |
| 346731 Castor | 56,54% | 48,14% | 8,40% | 100,00% | 50,00% | 50,00% |
| 346732 Papyrus | 56,54% | 48,14% | 8,40% | 100,00% | 50,00% | 50,00% |
| 346733 Bullrush | 56,54% | 48,14% | 8,40% | 100,00% | 50,00% | 50,00% |
| 346734 Spun Gold | 56,54% | 48,14% | 8,40% | 100,00% | 50,00% | 50,00% |
| 346735 Dandelion | 56,54% | 48,14% | 8,40% | 100,00% | 50,00% | 50,00% |
| 346736 Meadow | 56,54% | 48,14% | 8,40% | 100,00% | 50,00% | 50,00% |
| 346737 Yew | 56,54% | 48,14% | 8,40% | 100,00% | 50,00% | 50,00% |

| Green Building Schemes | |
|-------------------------------|---|
| BREEAM (UK and international) | <p>BRE Green Guide Ratings: Office - Not Available Education - Not Available Health Care - Not Available Retail (by fashion) - Not Available</p> <p>Potential contribution to following categories and credits: Hea 02 - Indoor air quality – minimising sources of air pollution Hea 05 - Acoustic Performance Mat 01 - Life Cycle Impacts Mat 05 - Designing for robustness Wst 01 - Construction Waste Management</p> |
| LEED 2009 US | <p>Potential direct or indirect contribution to following categories and credits: Indoor Environmental Quality Credit 4.1 Low Emitting Materials: Adhesive & Sealants Credit 4.3 Low Emitting Materials: Carpet Systems Materials and Resources Credit 2.1 Construction Waste Management Credit 4.1 Recycled content Credit 5.1 Regional Materials Innovation and Design Credits 1-4 1 Pilot Credit 43, Certified Products</p> |
| HQE (FR) | <p>Potential direct or indirect contribution to several points within following targets: 2. Integrated choice of products and construction materials 3. Low site nuisance 9. Acoustic comfort 10. Visual comfort 11. No unpleasant smells 12. Sanitary quality of areas 13. Sanitary air quality</p> |
| DGNB (D) | <p>Potential direct or indirect contribution to following criterion ENVIRONMENTAL QUALITY ENV1.2 Local Environmental Impact ECONOMIC QUALITY ECO1.1 Building-Related Lifecycle Costs ECO2.1 Efficient Use of Space SOCIOCULTURAL AND FUNCTIONAL QUALITY SOC1.2 Indoor Air Quality SOC1.3 Acoustic Comfort TECHNICAL QUALITY TEC1.5 Ease of Cleaning and Maintenance TEC1.6 Ease of Dismantling and Recycling</p> |



TacTiles™

- A smarter, more sustainable way to install carpet tiles
- No need for liquid adhesives
- Fitting tiles is quick, clean and easy and the process virtually eliminates emissions
- No damage to sub floors, and nothing to stop you lifting or moving the carpet whenever you want



Entrance Matting

Incredibly tough, hard-wearing and practical; indoor entrance matting acts as the first line of defence to any interior by removing almost 100% of dirt, rain and mud before it's walked into your flooring.

Both of the products in our commercial entrance matting range – Barricade and Foyer – are resilient, functional, easy to maintain and stylish. And it's for these reasons that our barrier matting forms an essential part of any maintenance programme needed to keep your floorcovering looking its very best.